

NAVIGATING THE

Future of Educational Design





Your Trusted Advisor

FORWARD-THINKING DESIGNS FOR THE MODERN-DAY STUDENT

Greetings,

Over the course of our company's history spanning three decades, we have never seen a paradigm shift in education like the one we experienced in 2020. While there is still much uncertainty in the aftermath of the COVID-19 pandemic, it is universally understood that schools will not operate like they did in a pre-pandemic world. Outdoor learning environments, enhanced airflow and daylighting are just a few examples of campus improvement projects that have suddenly become top priorities for Districts. As we look to the future, it is important for us to understand these trends and how we can adapt to meet the needs of the modern-day student.

The pandemic challenged traditional educational approaches and forced us to develop new ways of thinking. Today, campuses are more than places for students to learn. They are centers of communities, hubs for people to gather and share ideas, and safe places in times of crisis. Future educational design should incorporate solutions that address these growing community needs.

We have also seen the traditional delivery method for instruction change drastically, as homes became virtual classrooms for students. Through this experience, we were offered a glimpse into the disparity in learning styles that exists in all student populations. Many fell behind in a virtual environment while others flourished. The pandemic exposed a critical need for solutions that support all abilities, backgrounds and learning styles, a philosophy we call the "Whole Learner." When Districts review their capital outlay plans and evaluate available bond or federal stimulus funds for upcoming projects, they need a trusted advisor who can help maximize those funds for the benefit of all learners and the greater community.

Since 1984, JKAЕ has worked alongside K-12 Districts, Community Colleges and Universities to create learning environments that are safe, inclusive, and inspiring. As experienced designers and community planners, JKAЕ's architectural and engineering solutions thoughtfully intertwine the needs of students, staff and community members to enrich the human experience. We strive to be your trusted advisor to help guide you through this new paradigm in education. We truly value the trust our clients place in us and assure you that you and your community will be proud of the work that we can do together!

Looking Forward,

Derek Labrecque, Partner

AIA, DBIA, LEED AP, NCARB, ALEP
derek@jkaedesign.com | 530.401.3736

Chris Vicencio, Partner

AIA, NCARB, LEED AP, DBIA
chris@jkaedesign.com | 530.320.7049

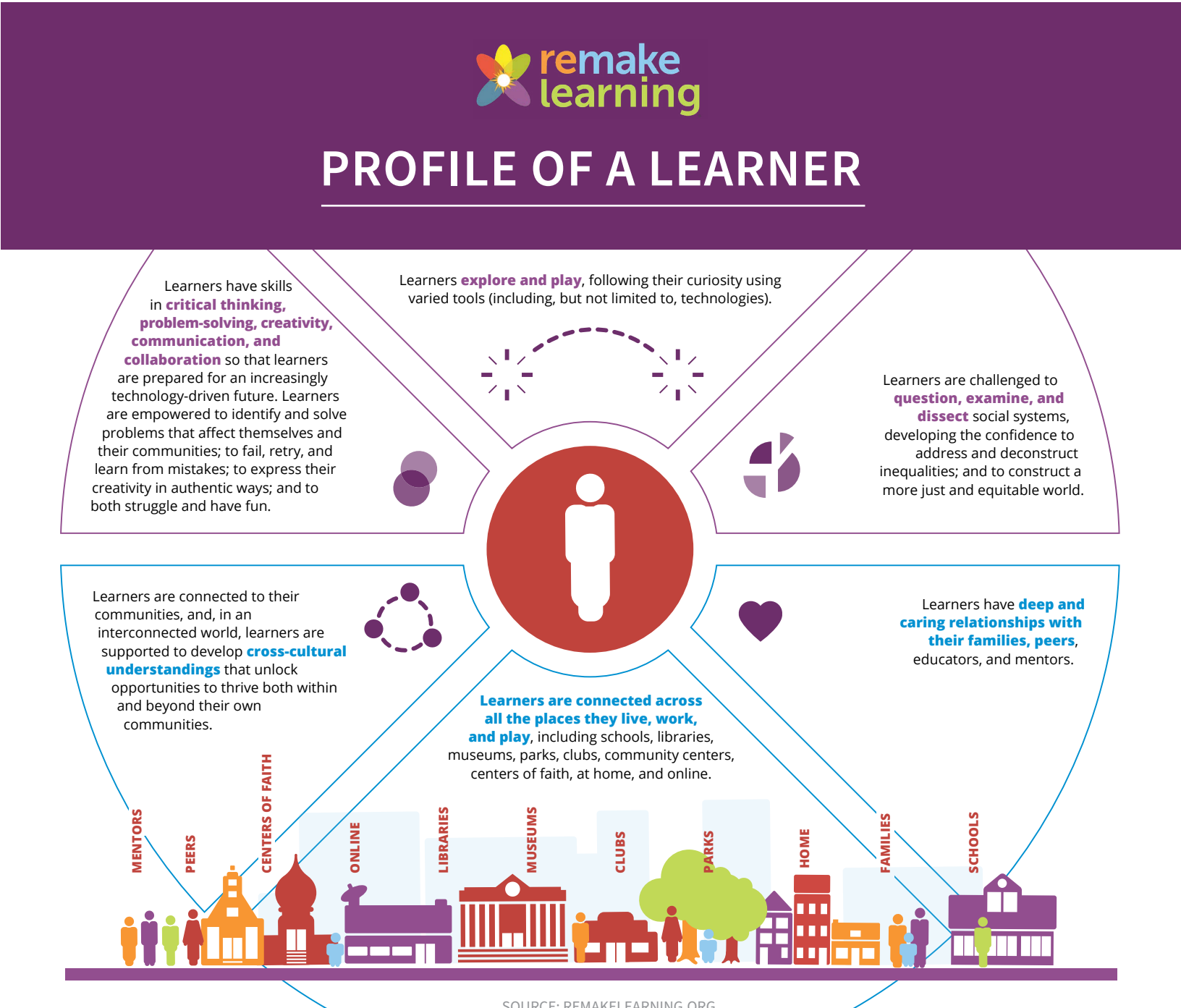
A BROADER PERSPECTIVE OF

Designing for the Whole Learner

We know that every student is unique and follows their own path as they continue to learn and grow. At JKAE, we design learning environments that support the **Whole Learner**, a philosophy that is rooted in the belief that students from different backgrounds with different learning abilities must have an equal opportunity to succeed.



Upper Left: Unschool Alternative Learning Center, **Upper Middle:** Butte College Welding & Manufacturing Building, **Upper Right:** Pasadena Elementary School STEM Lab, **Bottom Left:** W.C. Overfelt High School Music, Art & Administration Building, **Bottom Middle:** Solano College Automotive Technology Building, **Bottom Right:** Ashland Youth Center

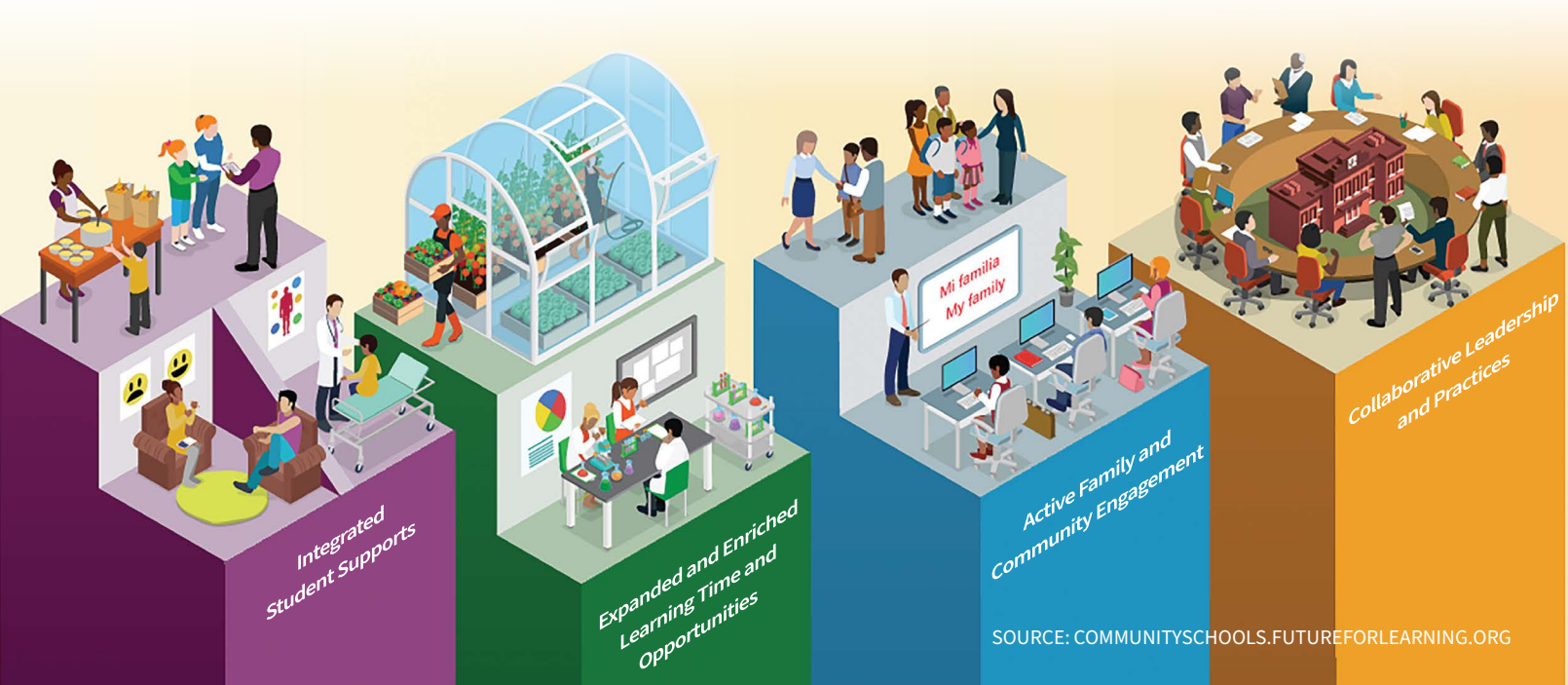


SCHOOLS AS

Center of Community

Students cannot perform well in the classroom if their personal lives are chaotic. That is why it is important for schools to focus on the whole student, by balancing academic success with their socio-emotional needs, to better prepare them for higher education and the workforce. By making the campus a hub of resources for students and the surrounding community, it becomes a part of the community such that students never truly leave its purview. Additionally, by encouraging students to connect with their communities to develop cross-cultural understandings, it unlocks opportunities for them to thrive both within and beyond their own communities. The following four pillars highlight ways in which community schools can provide holistic support for their student population:

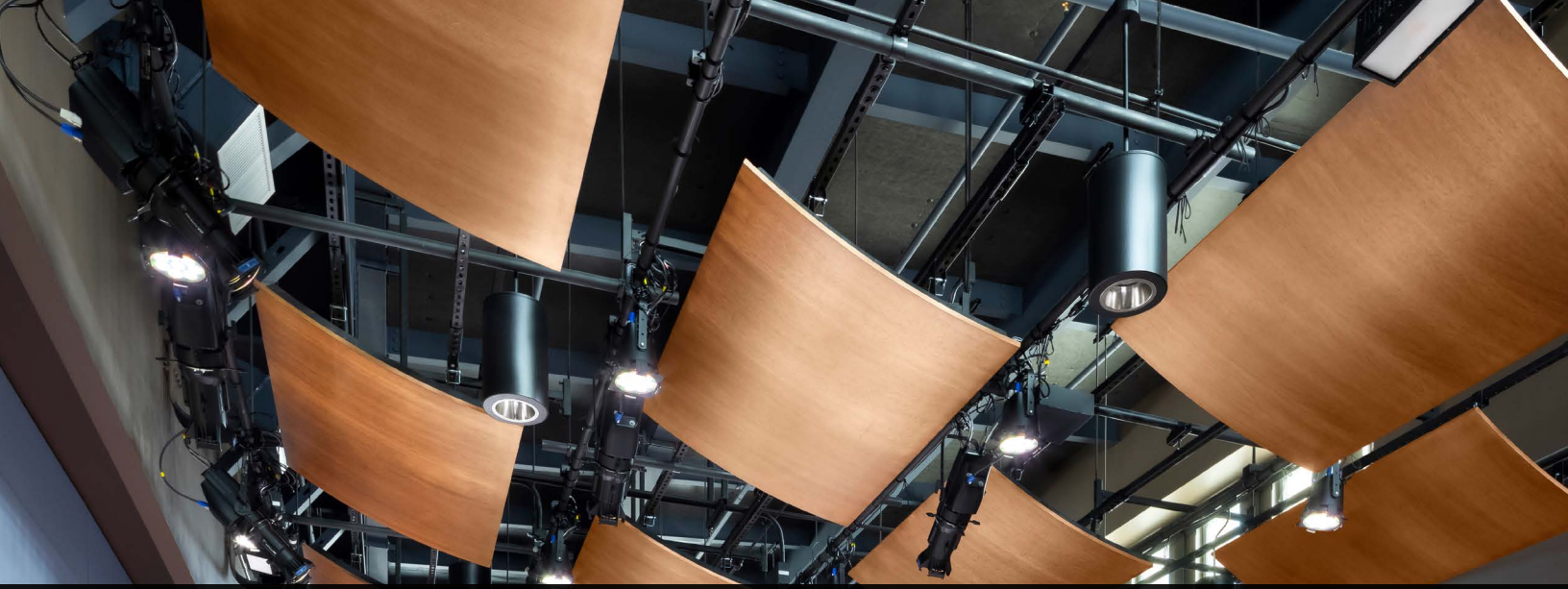
- PILLAR 1:** Integrated Student Supports
- PILLAR 2:** Expanded and Enriched Learning Time and Opportunities
- PILLAR 3:** Active Family and Community Engagement
- PILLAR 4:** Collaborative Leadership and Practices



Casa Roble High School SCORE Academy | Orangevale, CA



Community Forum | South Lake Tahoe, CA



ACHIEVING ENRICHING LEARNING ENVIRONMENTS



W.C. Overfelt High School Music, Art & Admin Bldg. & Quad Modernization | San Jose, CA

OUTDOOR LEARNING



New Technology High School Student Commons & Administration | Napa, CA

“If we provide children with what they need to be healthy and feel supported, and with opportunities they deserve to be successful in school, the student will succeed and families and neighborhoods will be stronger.”

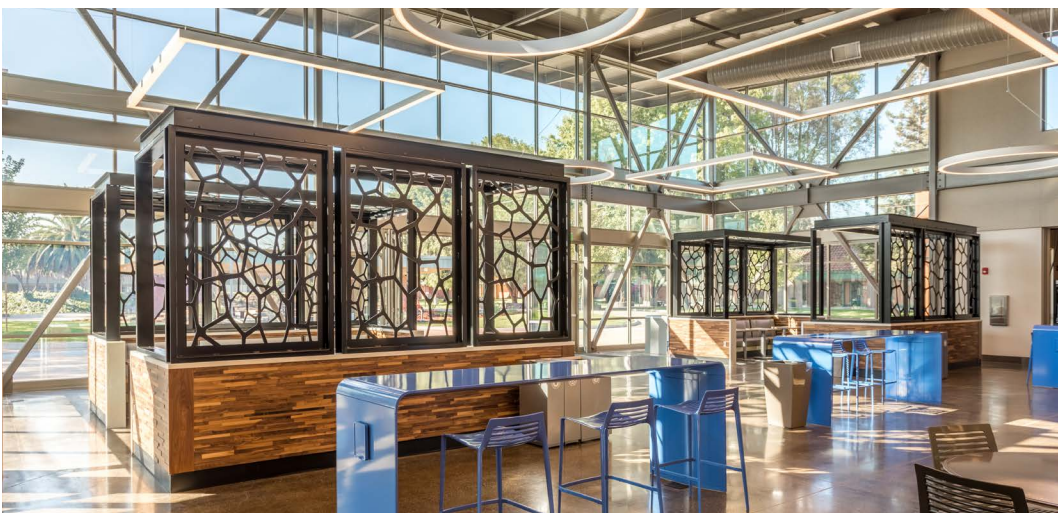
Martin Blank, President of the Institute for Educational Leadership (IEL)
and Director of the Coalition for Community Schools, Washington, DC

INDOOR-OUTDOOR CONNECTIONS



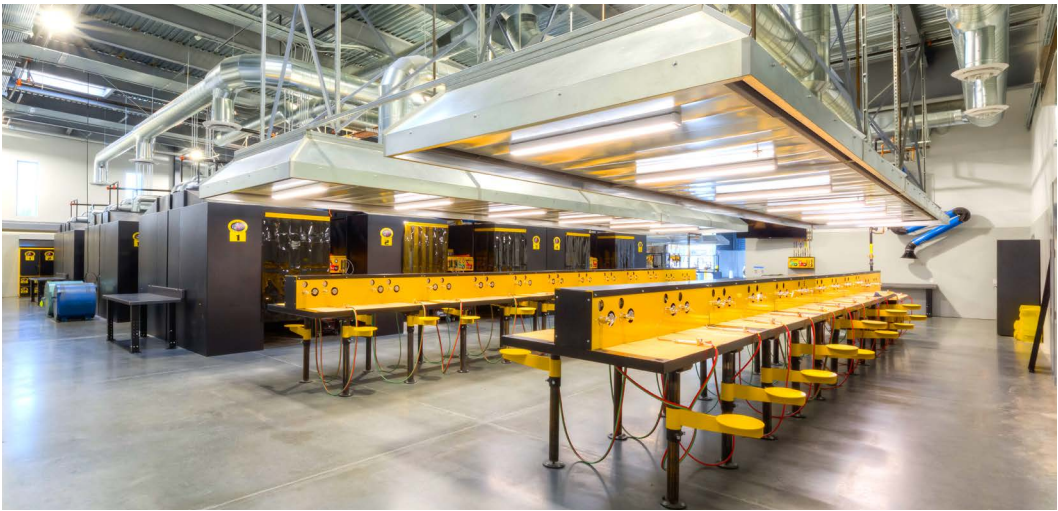
Casa Roble High School Student Union & Administration | Orangevale, CA

DAYLIGHTING



Yerba Buena High School Student Union & Administration | San Jose, CA

AIR QUALITY ENHANCEMENTS



Butte College Welding & Manufacturing Building | Oroville, CA



Merritt College Center for Science & Allied Health | Oakland, CA

GET IN TOUCH

Derek Labrecque, AIA, LEED BD+C, DBIA, ALEP
derek@jkaedesign.com | 530.401.3736

Chris Vicencio, AIA, LEED AP, DBIA
chris@jkaedesign.com | 530.320.7049

JKA E
architecture + interiors + engineering

Auburn | San Jose | Truckee-Tahoe | Reno
jkaedesign.com